

5/3/2017

# BZ HOUSE 400



Oil Per Board: 50 uL

Oil Pattern Distance: 39 Feet

Volume Oil Total: 22.3 mL

Total Boards Crossed: 446 Boards

Forward Oil Total:

12.4 mL  
248 Boards

Reverse Oil Total:

9.9 mL  
198 Boards

Notes

Conditioner:  
Type In or Select  
OneTransferType:  
Type In or  
Select One

Forward

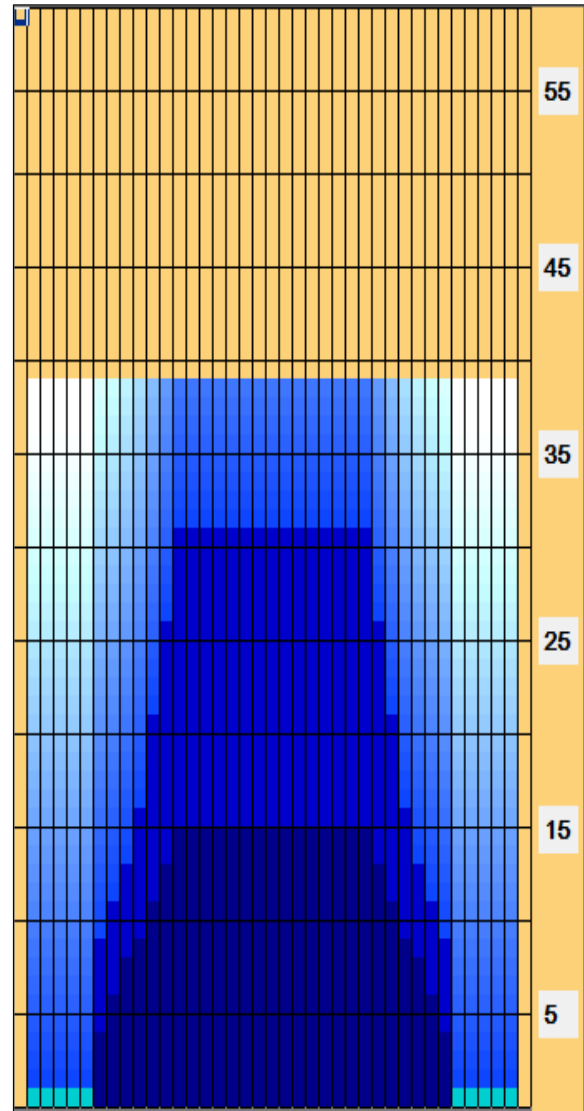
Reverse

Combined

Buff

	Start	Stop	Loads	Speed	Crossed	Start	End	Feet	T.Oil
1	2L	2R	2	10	74	0.0	1.4	1.4	3700
2	7L	7R	2	10	54	1.4	4.2	2.8	2700
3	8L	8R	1	14	25	4.2	6.1	1.9	1250
4	9L	9R	1	14	23	6.1	8.0	1.9	1150
5	10L	10R	1	14	21	8.0	9.9	1.9	1050
6	11L	11R	1	14	19	9.9	11.8	1.9	950
7	12L	12R	1	14	17	11.8	13.7	1.9	850
8	13L	13R	1	14	15	13.7	15.6	1.9	750
9	2L	2R	0	22	0	15.6	32.0	16.4	0
10	2L	2R	0	30	0	32.0	39.0	7.0	0

	Start	Stop	Loads	Speed	Crossed	Start	End	Feet	T.Oil
1	2L	2R	0	26	0	39.0	31.0	-8.0	0
2	13L	13R	2	18	30	31.0	25.9	-5.1	1500
3	12L	12R	2	18	34	25.9	20.8	-5.1	1700
4	11L	11R	2	18	38	20.8	15.7	-5.1	1900
5	10L	10R	1	18	21	15.7	13.2	-2.5	1050
6	9L	9R	1	14	23	13.2	11.3	-1.9	1150
7	8L	8R	1	14	25	11.3	9.4	-1.9	1250
8	7L	7R	1	10	27	9.4	8.0	-1.4	1350
9	2L	2R	0	10	0	8.0	0.0	-8.0	0

Arrow Zone  
Ratios

Item	2-6L:16L-20	6-10L:16:-20	11-15L:16L-20	16L-20:20-16R	16L-20:20-16R	20-16R:15-11R	20-16R:10-6R	20-16R:5-2R
Oil Arrow	100	340	910	1000	1000	910	340	100
Zone Ratio	10	2.94	1.1	1	1	1.1	2.94	10

Track Zone  
Ratios

Item	3L-7L:18L-18R	8L-12L:18L-18R	13L-17L:18L-18R	18L-18R:17R-13R	18L-18R:12R-8R	18L-18R:7R-3R
Description	Outside Track:Middle	Middle Track:Middle	Inside Track:Middle	Middle: Inside Track	Middle:Middle Track	Middle:Outside Track
Track Zone Ratio	7.69	1.72	1	1	1.72	7.69

